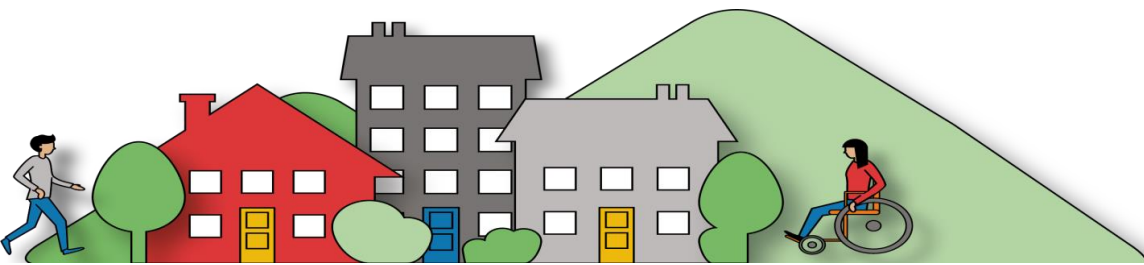




Designing in Independence – A Collaborative Approach.

Adrian Burke, Richard Lloyd & Steve
Garland

22nd November 2017





Our Mission

Our Mission:

Improving quality of life through provision of quality, bespoke accommodation that enables tenants to achieve independence, fulfil their potential and optimise enjoyment of life, and allows staff and family to be part of that journey





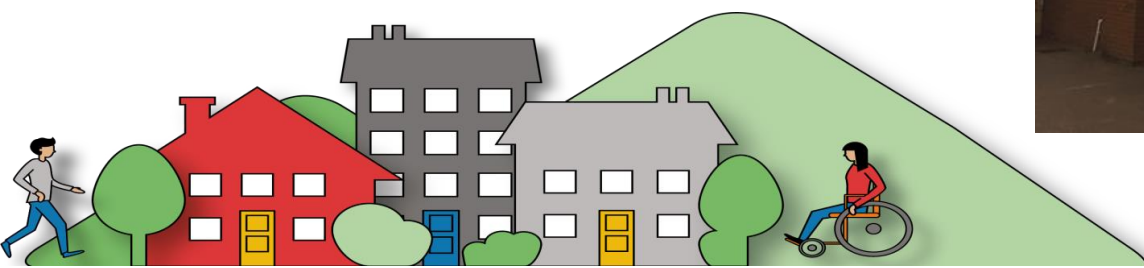
Closer to Home

- Framework made up of ABMU, NPT Bridgend & Swansea, 5 Support Providers
- Started in 2011
- Ordinary house ordinary street model
- Improving the lives of tenants and their families the key driver.
- Focus on reducing out of county & out of country placements
- Onus on Positive Behavioural Support





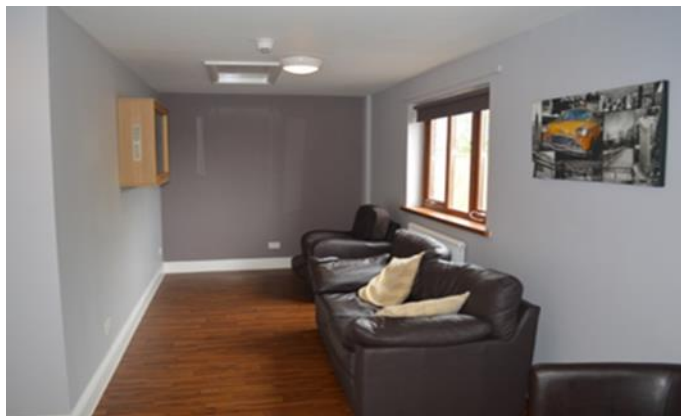
Closer to Home – An example





Some Typical Design Features

Enhanced Sound Proofing



High to Low sinks



Acoustic Floor Coverings



Specialist
Bathing
provision





Outcomes

- 40 people live in their own adapted ordinary homes
- 30+ people returned from out of area or very costly local services
- Dramatic improvements in quality of life e.g. participation, social inclusion, better relationships with family, material and physical wellbeing,
- Real case examples-
- A, Out of area residential college £ 311,000
- Cost of new C2H service circa £ 85,000
- Saving = £226,000
- B, Out of area residential college £ 170,000
- Cost of new C2H service circa £ 78,000
- Saving = £ 92,000





Questions & Contacts

Contact Details

adrianburke@fcha.org.uk

richardlloyd@fcha.org.uk

s.garland7@ntlworld.com



@firstchoiceha

