

INTELLIGENT PERSONAL ASSISTANTS

Using mainstream technology to enhance Independent Living





INNOVATE TRUST

We are utilising Intelligent Personal Assistant (IPA) Smart Speaker technology such as Amazon Echo, Google Home and IoT (Internet of Things) device with Samsung Smart Things to:

- Empower Individuals
- Support the SSWBA and Wellbeing of Future Generations Act
- Promote Wellbeing
- Maintain skill development & Increase independence
- Promote Digital Inclusion
- Save resources and maximise sustainability
- Economic, social & environmental wellbeing
- Support short and long term needs



The Problem

The social care sector and adults with learning disabilities are often excluded from technological developments. **56% of digitally excluded individuals have a disability or long-term condition and 27% of adults with a disability (3.3m people) have never been online.** The few technology systems that are available are not fit for purpose and are incredibly expensive.

We want to promote the idea of using mainstream technology that is available such as Amazon, Google, Phillips, Logitech, Samsung and other IoT devices and brands.



- To research and trial new advancements in Smart Technology that have the potential to achieve greater independence for people across the social care sector.
- To provide alternative support methods which are responsive and not intrusive through the use of IPA's & complimentary devices.
- Utilise the mainstream technologies available to reduce costs & maximise sustainability.
- Share our findings and expertise.

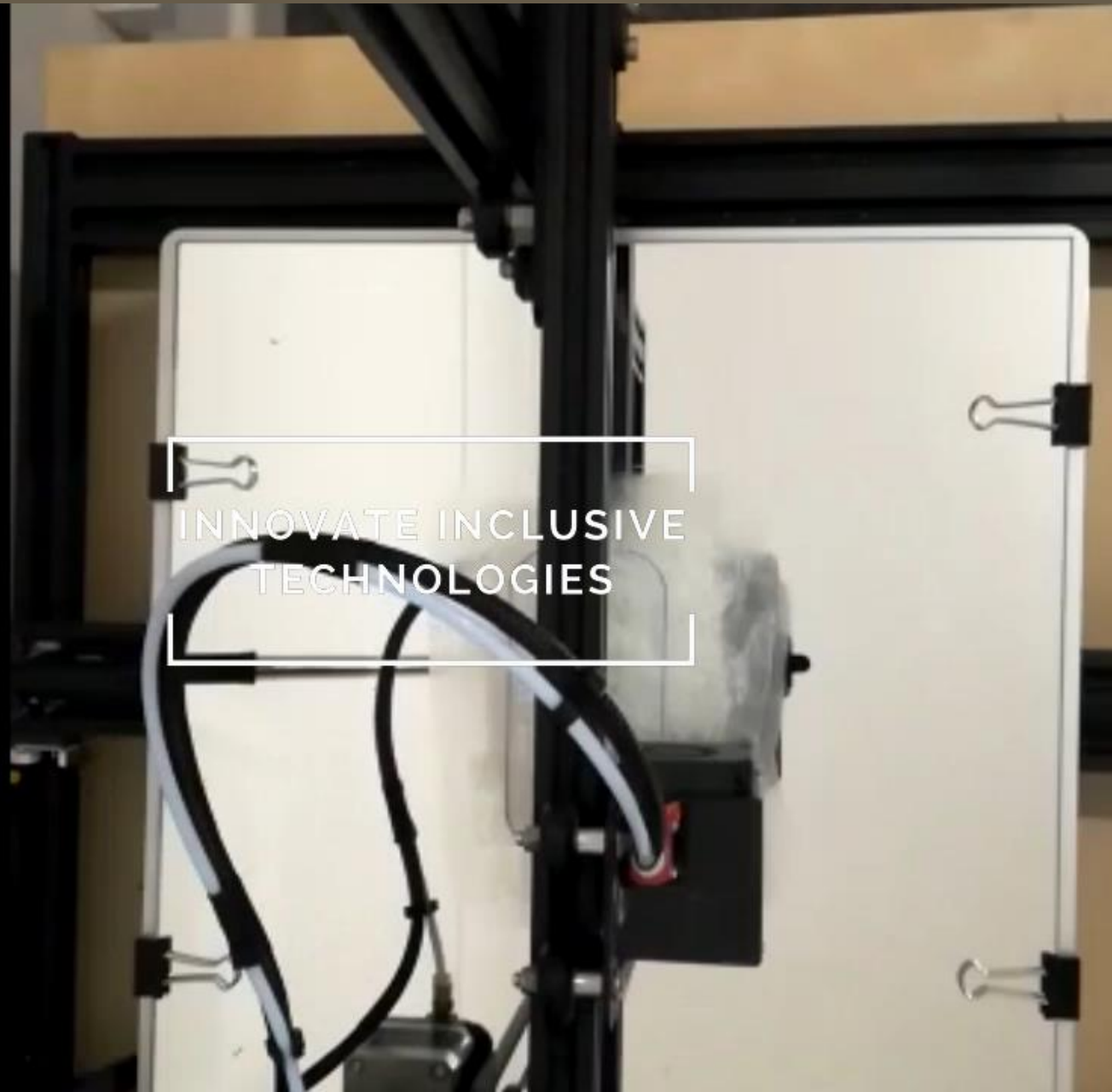


Why we need to be more digitally ambitious



- The social care sector is facing increasing financial pressures and receiving support solely through paid staff is costly and can be intrusive.
- Advancements in technology have not always been incorporated into the social care sector and where they have they are often out of date approaches.
- People consulted would prefer to use modern, mainstream technology.
- Individuals may already have some devices that are not being used to promote independence, these can be better utilised by linking them with IPA's and increasing connectivity.

◦ Where we are now



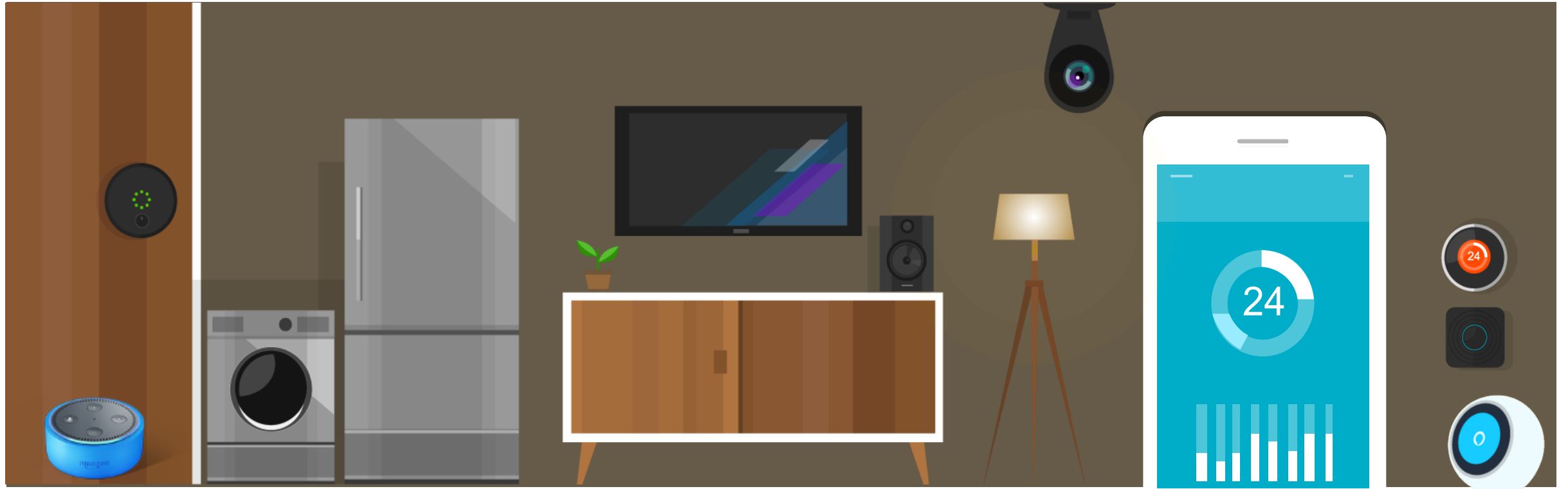
- Increased Independence
- Developing Digital Skills
- Developing Personal Skills
- Developing Social Skills
- Less reliance on Support Staff
- Improved Well-being
- Fun to use

Outcomes

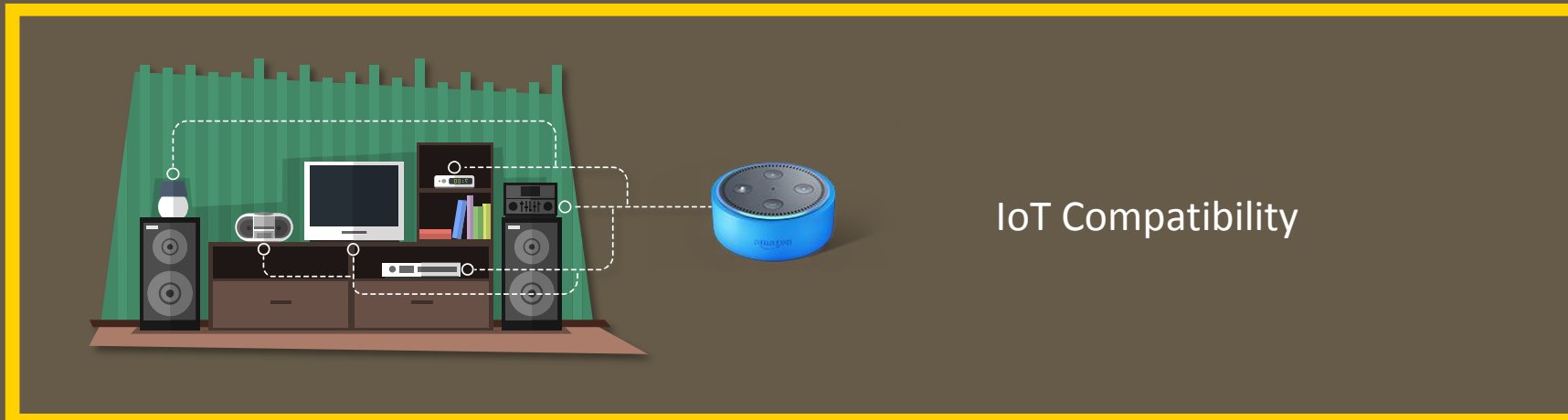
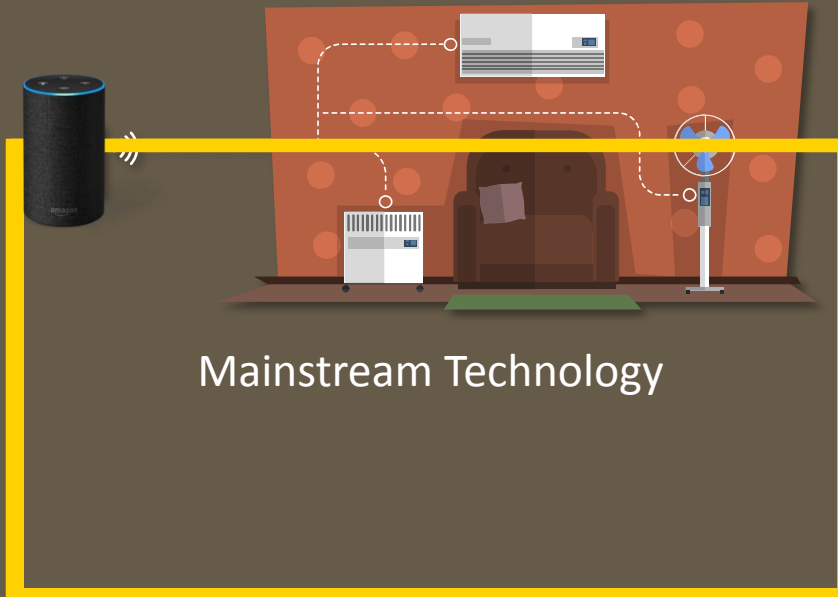
Research projects

Case studies

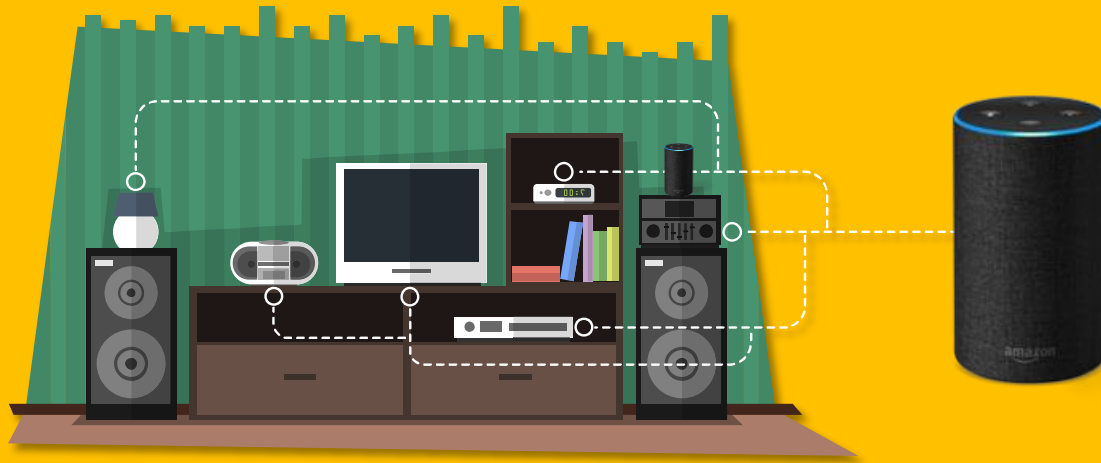
Sharing successes and lessons learnt



Why we chose these devices



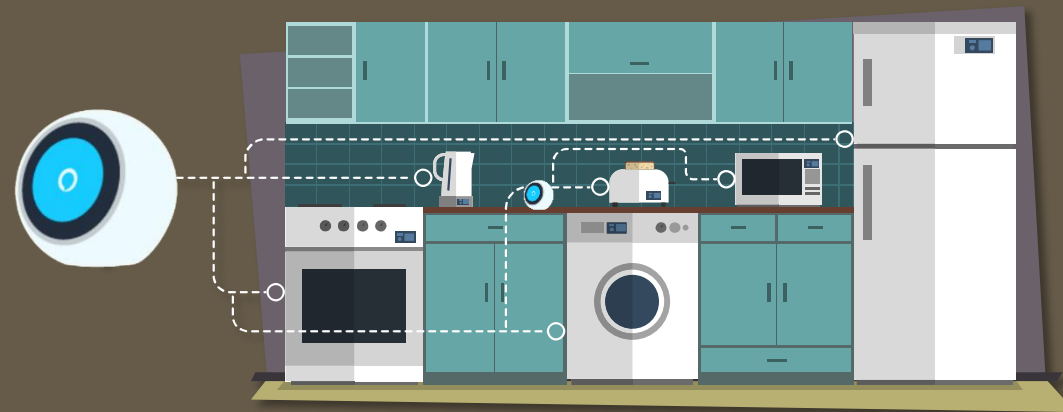
Voice Control & Gesture



Promoting independence and empowering individuals to gain control over elements of the home through voice and gesture.

Supporting Independence & Minimizing Risk

We aim to use mainstream technology to promote independence and reduce risk within the home. Using geofencing technology to automatically turn off gas & water appliances.



1

To identify new & existing products & devices along with new ways of using them, better meeting individuals needs

2

To further engage with manufacturers and help produce products for the mass market that can benefit supported people

3

To provide consultancy, advice & training across the public sector & make it all happen

Partnerships



Thank you

ashley.bale@innovate-trust.org.uk

lisa.french@innovate-trust.org.uk

nick.french@innovate-trust.org.uk

