

Vale of Glamorgan Mental Health Dispersed Scheme

Helen Jones, Sarah Wills
and Dina Williams



GIG
CYMRU
NHS
WALES

Bwrdd Iechyd Prifysgol
Caerdydd a'r Fro
Cardiff and Vale
University Health Board



cefnogipobl
supporting **people**



supporting independence
cefnogi annibyniaeth

Background

**Wales Audit Office
Report**

**Multi-Agency Mental
Health and Housing
Sub-Group**

**Forming part of the
UHB's model of
support**

**Remodelling of an
existing floating
support scheme**

**Multi-Agency
Steering Group**

Background

Shared aims and objectives

Budgets

Collaborative modelling of service (Supported Housing, Dispersed)

Shared Operational Planning

What does the service offer?



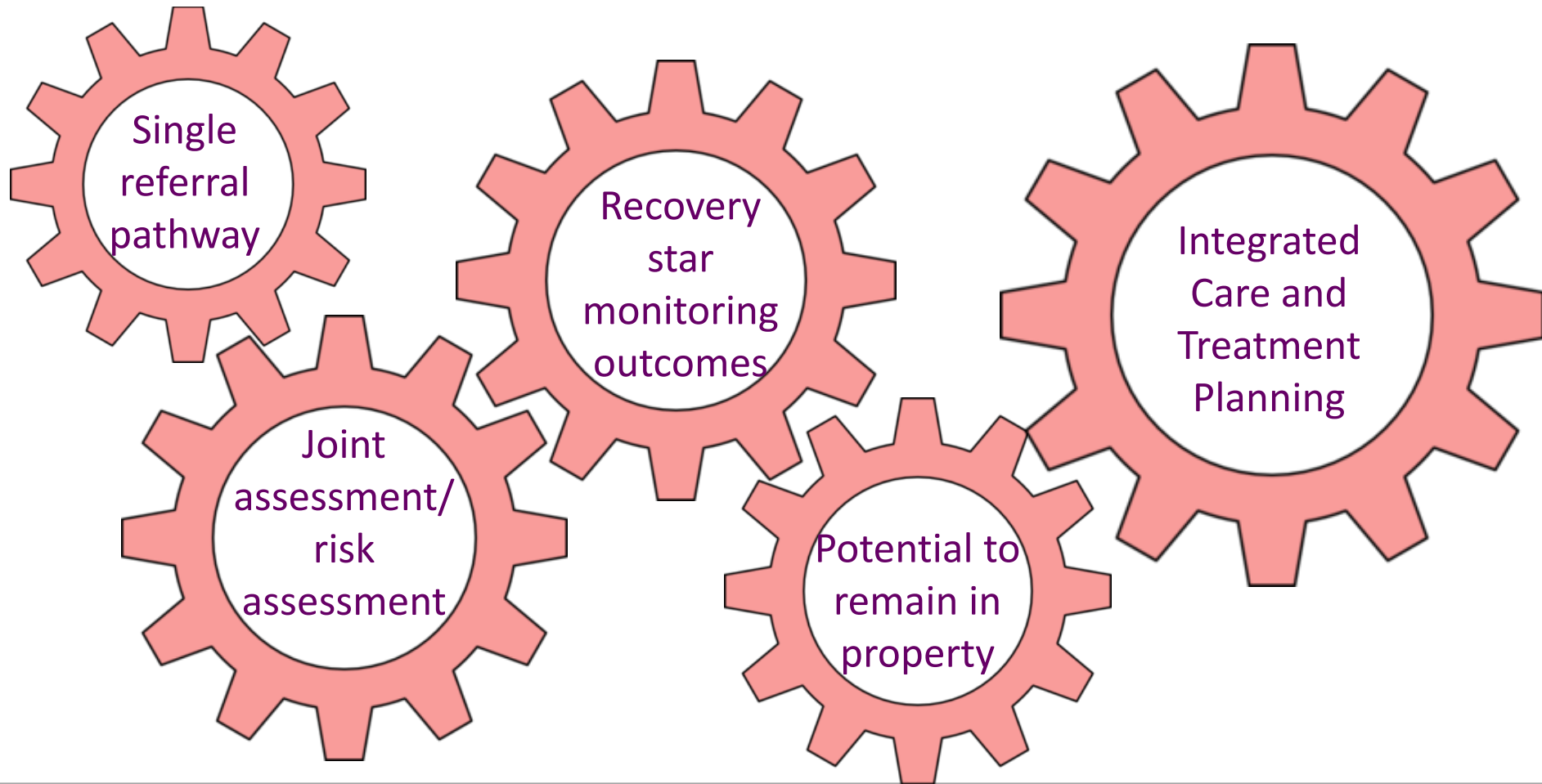
IRIS team Intensive Mental Health Rehab

Integrated Housing Management, Support & Health

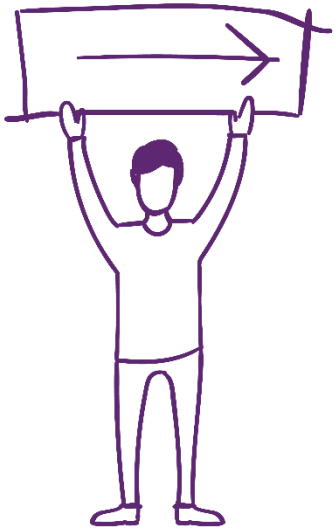
Gofal Specialist Mental Health Housing Related Support

Newydd providing 6 self-contained dispersed units of accommodation

How this works



Gofal perspective



 **Gofal**
Thinking Differently

Enhanced ability to support a higher level of need than previously

Avoids duplication of services

Allows the effective utilisation of resources

Targeting of services at those in greatest need

Supports partners in addressing strategic priorities

Aligns to the requirements of SS&WB Act and Together for Mental Health



GIG
CYMRU
NHS
WALES

Bwrdd Iechyd Prifysgol
Caerdydd a'r Fro
Cardiff and Vale
University Health Board

cefnogipobl
supporting **people**

supporting independence
cefnogi annibyniaeth



 **newydd**

 **Gofal**
Thinking Differently

Health Board perspective

Potential to support repatriation agenda

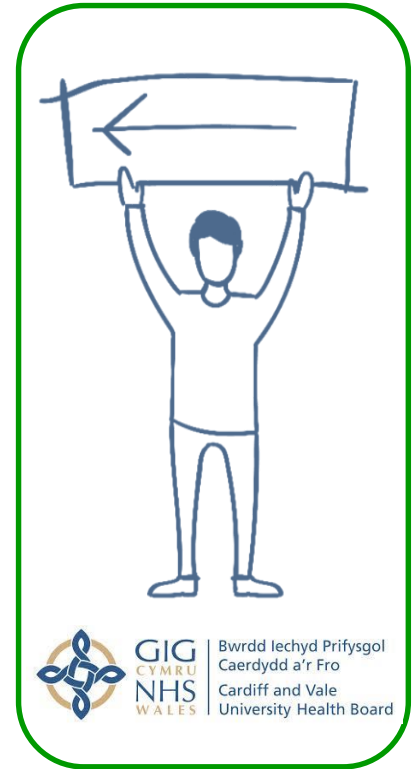
Savings to health budget

Supports step-down from 24 hour

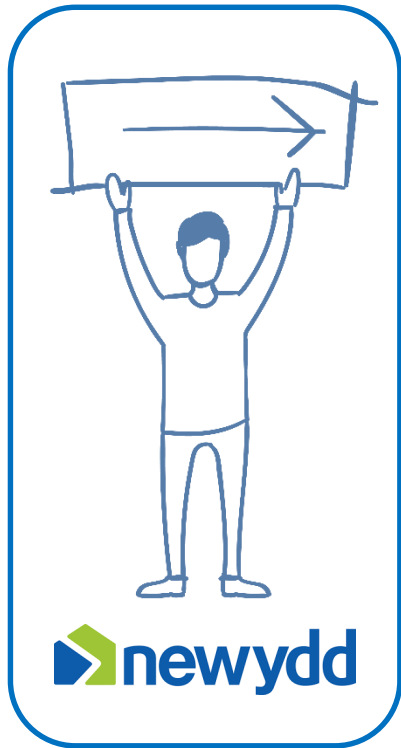
Targeting of Supported Housing Services

Relieves health professionals of housing management responsibilities

Supports in the development of evidence based interventions



Landlord perspective



Contributes to the health and wellbeing agenda

Collaborative work

Specialist supported housing

Increased mitigation of risk

Local Authority perspective

Mental health a priority in needs mapping and SPOP

Supports in the prevention of homelessness

Better utilisation of Supporting People money

Strengthens the links to mental health services

Provides a wrap around service



Service user perspective

History

Diagnosis of Schizophrenia, history of repeat psychiatric admissions, evictions/homelessness and substance misuse



Case Study A

Managing Accommodation

Successfully maintained own tenancy for over 2yrs. Support now fully withdrawn, A has a secure tenancy.

Feeling Part of the Community

A's anxiety when accessing the community has significantly reduced, he's set goals to attend college and social groups.

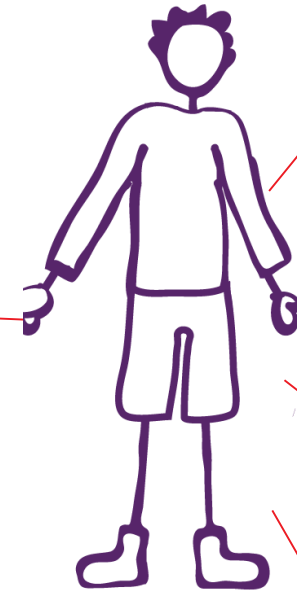
Mentally Healthy

A has not had any reoccurrence of psychosis and no re-admissions. Self-harm and hallucinations are also significantly reduced.

Service user perspective

History

Diagnosis of Schizophrenia, history of psychiatric admissions, long-term stay in shared supported housing



Case Study H

Managing Accommodation – Successfully maintained own tenancy for over 2yrs and very proud of his home. Support is gradually withdrawing, H will have a secure tenancy.

Managing Money – Developed excellent budgeting skills and manages money independently.

Feeling Part of the Community – Developed interest in music and joined a local project, H now plays drums in a band regularly.

Mentally Healthy – No reoccurrence of psychosis during support; now presents as confident, relaxed and very positive about the future.

Learning

Availability of
suitable
accommodation

Availability of
single person
accommodation

Welfare
reform

Shared access
to databases

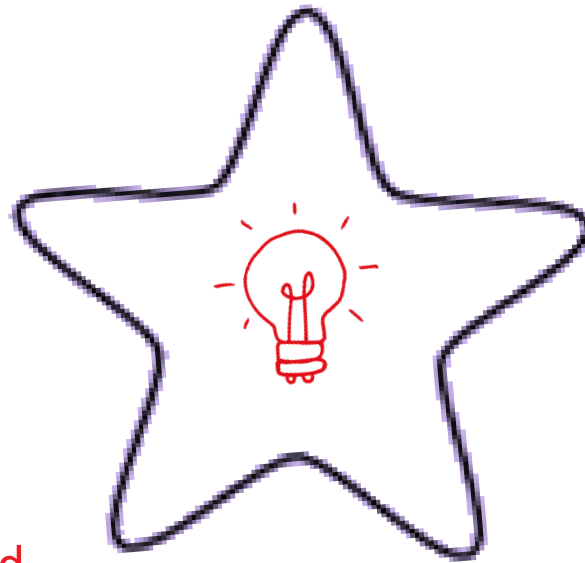
Shared office
accommodation

Key benefits and outcomes

Seamless
Support

Improved pathway
into supported
housing

Enhanced supported
housing for the Vale
of Glamorgan

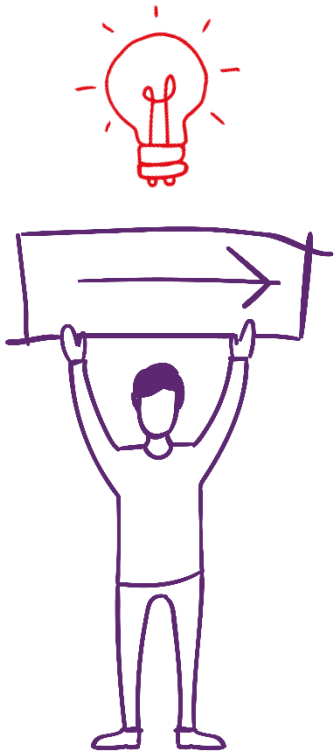


Utilisation of
existing health and
SP budgets

Service recently
subject to a WG
Evaluation

Create
sustainable
tenancies

Enhancing our partnership with service users



 **Gofal**
Thinking Differently

People with mental health problems are experts by experience

Service user influence at all levels in the organisation

Service users have an integral role in monitoring, evaluating and future planning of services

Service user involvement in tender bids and presentations

Long-term aim of having a service user on the steering group

Any Questions?



Welsh Government Evaluation report can be found at:

<http://gov.wales/statistics-and-research/evaluation-vale-glamorgan-dispersed-housing-scheme/?lang=en>

Contact details:

- Sarah Wills, Project Co-ordinator, Gofal, sarahwills@gofal.org.uk 02920895250
- Pam Toms, Housing Solutions and Supporting People Team Leader, ptoms@valeofglamorgan.gov.uk 01446 709793
- Helen Jones, Housing Strategy and Supporting People Manager, heljones@valeofglamorgan.gov.uk 01446 709326
- David Willicombe, Manager, IRIS, David.Willicombe@wales.nhs.uk 02920907677
- Rebekah Vincent-Newson, Social Services, rvincent-newson@valeofglamorgan.gov.uk
- Dina Williams, Independent Living Manager, Newydd, dina.williams@newydd.co.uk 029 2000 5472