



Llywodraeth Cymru
Welsh Government

Strategaeth Tlodi Llywodraeth Cymru

Welsh Government Poverty Strategy

Sut i fynd i'r afael ar “Y broblem ddyrys tlodi”

How to address “The wicked problem of poverty”



Llywodraeth Cymru
Welsh Government

www.gov.wales

Child Poverty Strategy for Wales

Tymor hir o beidio â bod ag adnoddau digonol i fforddio bwyd, amodau byw neu amwynderau rhesymol neu gymryd rhan mewn gweithgareddau (megis mynediad at gymdogaeth a mannau agored deniadol) mae eraill mewn cymdeithas yn eu derbyn fel mater o drefn.

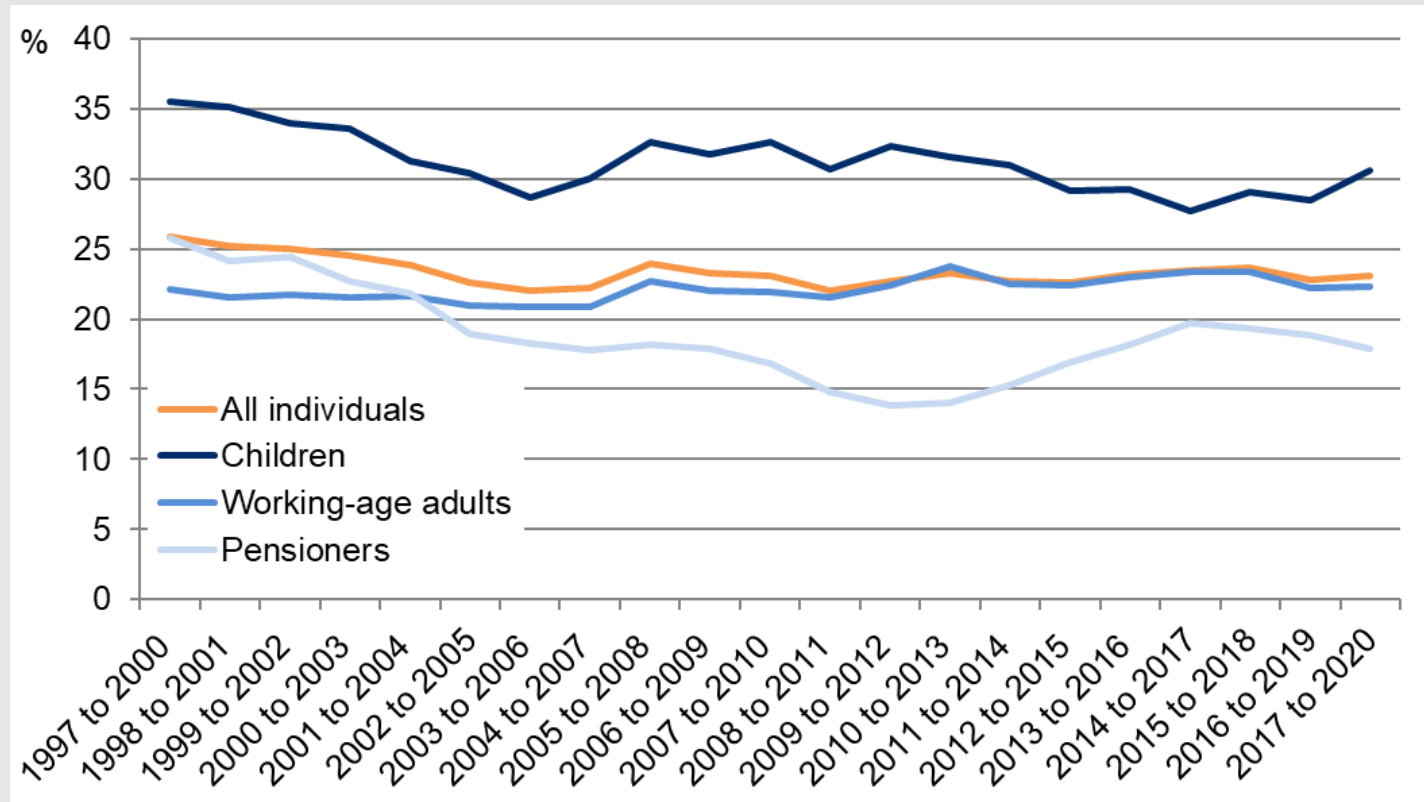
A long-term state of not having sufficient resources to afford food, reasonable living conditions or amenities or to participate in activities (such as access to attractive neighbourhoods and open spaces) that are taken for granted by others in their society.



March 2015

Tlodi yng Nghymru

Poverty in Wales



Canran pob grŵp oedran yng Nghymru sy'n byw mewn tlodi incwm cymharol (ar ôl costau tai), cyfartaleddau tair blynedd Ariannol

Percentage of each age group in Wales living in relative income poverty (after housing costs), three-financial-year averages

Tlodi yng Nghymru

Poverty in Wales

Sefydliad Bevan Foundation

Cipolwg ar dlodi yn ystod Gaeaf 2021

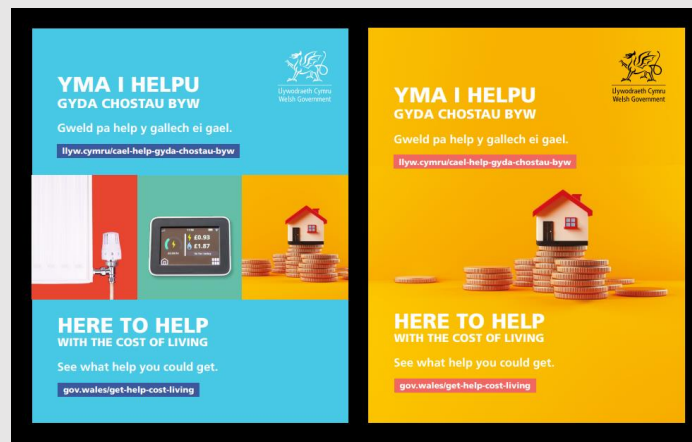
A snapshot of poverty in Winter 2021

- Mae aelwydydd yn brwydro i gael dau ben llinyn ynghyd
- Safonau byw yn cael eu gwasgu
- Mae dyled bersonol yn broblem fawr
- Mae'r effaith ar blant yn cynyddu
- Households are struggling to make ends meet
- Living standards are being squeezed
- Personal debt is a major problem
- The impact on children is getting greater

Argyfwng Costau byw

Cost of living Crisis

- Cynllun Cymorth Tanwydd Llywodraeth Cymru
- Cronfa Cymorth Dewisol
- £150 cost y taliad byw
- Cynllun talebau tanwydd
- Hawliwch beth yw eich ymgyrch chi
- Lleoedd cynnes
- Welsh Government Fuel Support Scheme
- Discretionary Assistance Fund
- £150 cost of living payment
- Fuel voucher scheme
- Claim what's yours campaign
- Warm Hubs



Trechu Tlodi yn y Tymor Hir

Tackling Poverty in the Longer term

- Cyflog Cymdeithasol
 - prydau ysgol am ddim
 - presgripsiynau am ddim
 - teithiau bws am ddim i bensiywyr
 - lleoedd gofal plant rhan amser am ddim
- Cartrefi Cynnes
- Gwaith Teg / cyflog byw
- Ymrwymiad y Cabinet i weithredu lywodraeth
- Social Wage
 - free school meals
 - free prescriptions
 - free bus travel for pensioners
 - free part time childcare places
- Warm Homes
- Fair Work / living wage
- Cabinet commitment to cross Government action



You may be entitled to more benefits than you think

Are you missing out?
WEST GOVERNMENT

Call the free helpline:

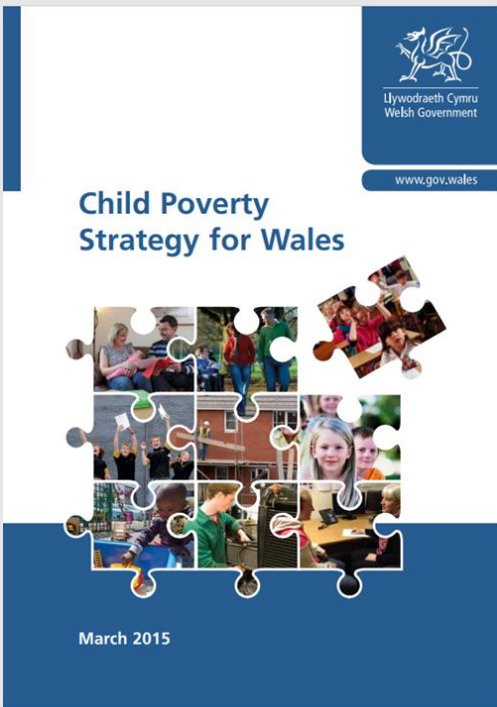
0808 250 5700

gov.wales/claimwhatsyours

citizens
advice

Strategaeth Tlodi Plant Cymru

Child Poverty Strategy for Wales



Pum Amcan Strategol:

1. Lleihau diweithdra / anweithgarwch
2. Cynyddu sgiliau
3. Lleihau anghydraddoldebau
4. Creu economi a marchnad lafur cryf
5. Cefnogi teuluoedd "yma ac yn awr" i gynyddu incwm aelwydydd

Five Strategic Objectives:

1. Reducing worklessness
2. Increasing skills
3. Reducing inequalities
4. Strong economy and labour market
5. Supporting families in the "here and now" to increase household income and tackle the poverty premium

CPCC - 'Fframwaith blaenoriaethu' posibl

WCPP - A potential 'prioritising framework'



Lleihau'r galwadau ar gyllideb aelwydydd a chynyddu incwm fel bod anghenion sylfaenol yn cael eu bodloni
Reducing demands on household budget and maximising income so that basic needs are met

Lleihau costau a chynyddu incwm
Reducing costs, maximising income

'Llwybrau' allan o dlodi
'Pathways' out of crisis

Mynediad at waith (o ansawdd uwch/sy'n talu'n well), gofal plant hyblyg a fforddiadwy, a chyfranogiad economaidd-gymdeithasol ehangach
access to (higher quality/better paid) work, flexible and affordable childcare, and wider socio-economic participation



Mynd i'r afael â rhwystrau sy'n gysylltiedig ag amgylchedd neu gymdogaeth uniongyrchol pobl
Tackling barriers related to people's immediate environment or neighbourhood

Amgylchedd galluogi
An enabling environment

Llwyth meddwl ac iechyd Meddwl
Mental load, mental health

Mynd i'r afael â'r baich emosiynol a seicolegol a ysgwyddir gan bobl sy'n byw mewn tlodi ac allgáu cymdeithasol
Addressing the emotional and psychological burden carried by people living in poverty and social exclusion.



Adnewyddu'r Strategaeth Tlodi Plant

Refreshing the Child Poverty Strategy

- Nid rhestr arall o fentrau polisi
- Mecanwaith ar gyfer cydgysylltu
- Ni all Llywodraeth Cymru ddatrys problemau tlodi ar ei phen ei hun
- Rydym am ymgysylltu ag ymarferwyr / arbenigwyr a phlant a phobl ifanc
- Heddiw yw dechrau'r drafodaeth
- Not another list of policy initiatives
- Mechanism for coordination
- Welsh Government cannot solve issues of poverty alone
- We want to engage both with practitioners / experts and children and young people
- Today is the start of the discussion

Cwestiynau ar gyfer y gweithdy

Questions for the workshop

- Beth arall allwch chi ei wneud fel sefydliad / ydych chi am ei wneud fel sefydliad i gefnogi gwella lefelau Tlodi Plant?
- Sut gall Strategaeth Tlodi Plant ar ei newydd eich helpu / hwyluso hyn – beth sydd angen iddi ei wneud?
- I ba raddau ydych chi'n meddwl y byddai targedau (neu nodau) o gymorth i annog ffocws cydgysylltiedig ar fynd i'r afael â thlodi plant?
- Beth yw'r heriau?
- Sut gallwn ni gael mwy o effaith o'n gweithredoedd ar y cyd?
- Pa gymorth sydd ei angen ar wasanaethau cyhoeddus i drechu tlodi?
- Sut gallwn ni roi'r strategaeth ar waith gyda'n gilydd?
- What more can you do as an organisation / do you want to do as an organisation to support improving Child Poverty levels?
- How can a refreshed Child Poverty Strategy help you / facilitate this – what does it need to do?
- To what extent do you think targets (or goals) would be helpful in encouraging a coordinated focus on tackling Child poverty?
- What are the challenges?
- How do we get more impact from our collective actions?
- What support do public services need to tackle poverty?
- How can we implement the strategy together?