

Hospital to Home

Mental Health and Housing Support Services

Sarah Wills – Head of Services, Gofal
Eve Freitag – Project Co-ordinator, Gofal

About Gofal

Leading Welsh mental health charity

Support over 3000 people a year

Work in 13 Local Authorities and 5 Health Board areas

Recovery focussed, trauma-informed, compassionate

Specialise in integrated service models

Hospital to Home

**In-reach housing
advice across 3
Health Boards**

**Act as a link between
Health and Housing**

**Brokerage of services
to meet individual
need**

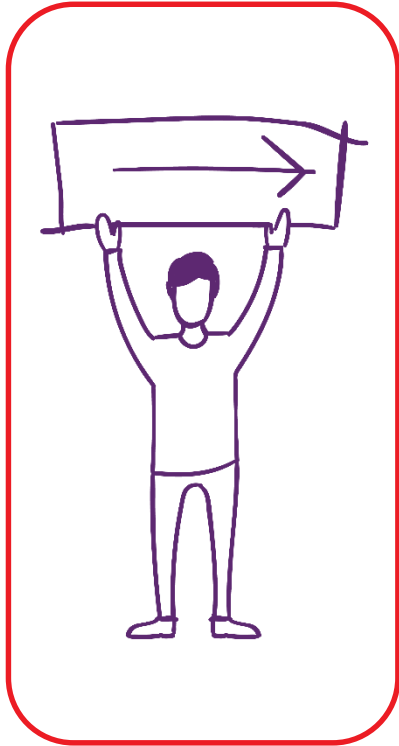
**Co-located with
Health in hospitals
across Aneurin Bevan
UHB**

**Address issues
preventing someone
from returning home**

**Support to make
homeless
applications and to
navigate the system**



Benefits



Ensures the person's social needs are being addressed alongside their clinical needs

Integration and partnership working which achieves better outcomes for both individuals and the public purse

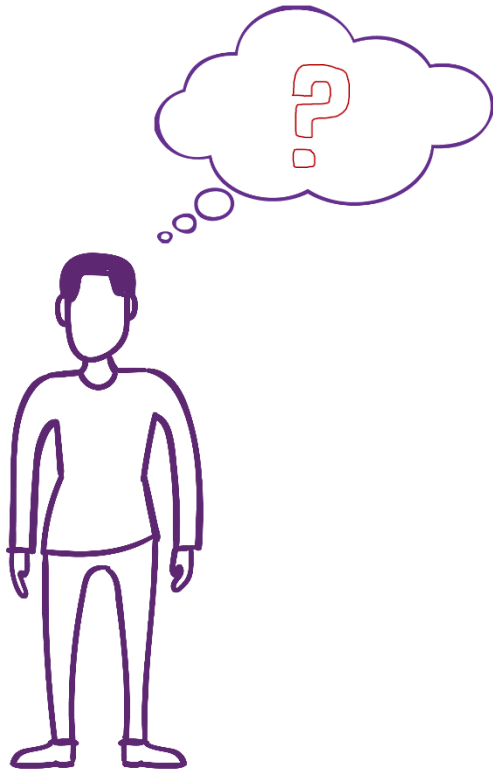
Reduces the length of admission and risk of DTOC

Reduces the risk of and prevents homelessness

Fosters positive working relationships between Health and Housing professionals

Aligns to the requirements of SS&WB Act and Together for Mental Health

What people have said...



“With the demand for support and practical advice..., working alongside and having [Gofal]... on hand following...ward round and prior to any afternoon discharge plans, screening patients for any housing needs, has been invaluable to ensure that people do not fall through the net which ultimately minimises any arising issues between Health and the Local Authority’s Homeless departments”

**Rhian Isles - Ward Manager, Admissions Ward,
Royal Glamorgan Hospital**

Outcomes – Newport

84% prevented from becoming homeless

85% reported feeling more able to manage a tenancy

74% who could return home did after support



89% reported an improvement in their mental health & wellbeing

95% reported a positive outcome

98% of people received support with debt and benefits

Case Study

History

Admitted to the Crisis Ward with psychosis after fleeing domestic violence, homeless on discharge and history of poly substance use.



Prevention of Homelessness/DTOC – Liaison with homelessness department, negotiation of temporary accommodation

Managing Money – Support to apply for appropriate benefits and debt advice

Mentally Healthy –supported to access CMHT in her new area, ongoing support to manage the transition & other needs

“I feel like a new woman”
“The support has changed my life”

Any Questions?



Contact details:

Sarah Wills, Head of Services (Central), Gofal, sarahwills@gofal.org.uk 01656 647722 @Sarah_Wills_

Evee Freitag, Project Co-ordinator, Gofal, EwelinaFreitag@gofal.org.uk 02920 895250 @FreitagEvee

www.gofal.org.uk

twitter.com/gofal

facebook.com/GofalCymru